

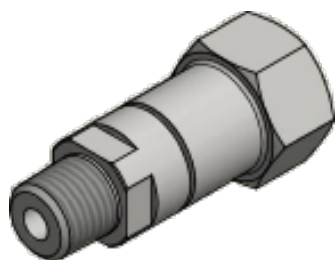
## CV300 SSG – DRUVA® PUR CHECK VALVE FOR PURE GASES



### SEAT MATERIAL STAINLESS STEEL/CERAMICS, 300 BAR WORKING PRESSURE, BODY STAINLESS STEEL

Used in pipelines, the CV300 SSG prevents an undesirable flow in the opposite direction to the main flow direction.

Mounted in the high-pressure area of manifolds of pure gas supply systems, the CV300 SSG protects the compressed gas cylinders against transfer in the event of incorrect operation. The CV300 SSG can be used in supply systems for inert, flammable, oxydising and corrosive gases up to a gas quality of 6.0.



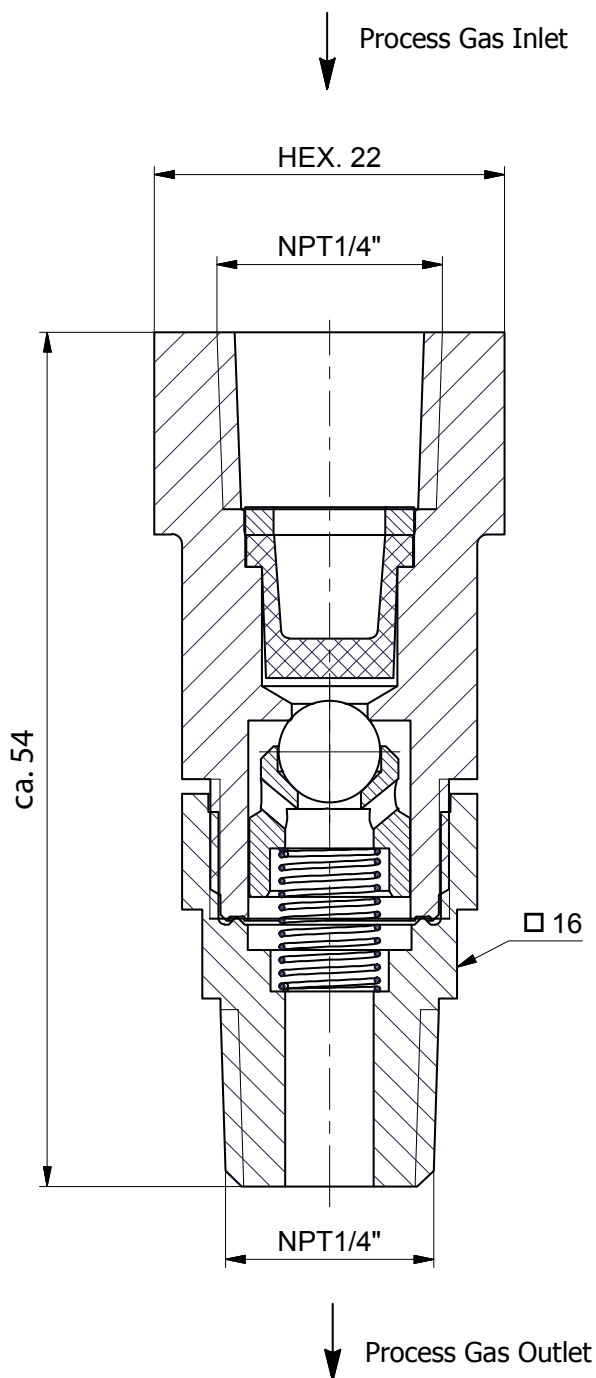
### SPECIAL FEATURES:

The special seat seal and the use of selected gas-wetted parts allow the use with oxygen up to 300 bar working pressure. The Oxygen ignition test for non-metallic seat sealed check valves which is required during development phase can be omitted with the CV300 SSG due to targeted material selection.

- > Compact design
- > Designed and approved in accordance with relevant sections of ISO 10297:2015
- > Specially cleaned

TECHNICAL DATA	
<b>Working temperature:</b>	-20 °C to +60 °C
<b>Inlet connection:</b>	NPT 1/4 " female
<b>Outlet connection:</b>	NPT 1/4 " male
<b>Max. working pressure:</b>	300 bar
<b>Cv-value:</b>	< 0,29
<b>Pressure drop at inlet pressure 41 bar and flow 20 m³/h (N₂)</b>	0,5 bar
<b>Pressure drop at inlet pressure 41 bar and flow 100 m³/h (N₂)</b>	3,8 bar
<b>Length:</b>	54 mm
<b>Leakage rate seat at 21 °C:</b>	1x10 <sup>-2</sup> mbar l/s (Helium)- bei 10 bar 1x10 <sup>-4</sup> mbar l/s (Helium)- bei 300 bar
<b>Leakage rate outside:</b>	1x10 <sup>-8</sup> mbar l/s (Helium)
<b>Weight:</b>	0,1 kg
<b>Material gas wetted parts:</b>	
<b>Valve body:</b>	Stainless Steel 316L
<b>Filter:</b>	AISI 316L
<b>Valve seat:</b>	Ceramic (Si3N4)
<b>Spring:</b>	Stainless Steel 316L
<b>Test in production:</b>	Pressure test for each valve
	Test leak rate seat with Helium for each valve
<b>Approvals during development:</b>	Typetest in accordance with relevant sections of ISO 10297:2015

## TECHNICAL DRAWING



TECHNICAL SPECIFICATION  
MATERIAL: STAINLESS STEEL 1.4404  
SEAL: SILICON NITRIDE BALL

INLET: NPT1/4"F  
OUTLET: NPT1/4"M

INLET PRESSURE:  
MAX.300BAR

GAS TYPE:  
DEFINED BY PRODUCT LINE AND TYPE  
(CHECK APPROVED GAS TYPE IN DATASHEET)

SST LINE:  
INCLUDING CORROSIVE GASES  
AND TOXIC GASES

